

Spire

December
2019
Vol. 28
No. 11



There have been many times in these past weeks, as our days get shorter, when I have longed for the sun to rise. I can't even imagine living in the northern parts of our world where the sun shines but a few hours of the day this time of year. As darkness is no laughing matter! It is enveloping. It is difficult to escape. It can be almost suffocating at times. Darkness is often accompanied by the feeling of longing.

Have you ever experienced the feeling of longing? Perhaps your longing has had nothing to do with physical light, perhaps, instead, you know what it feels like to long for relief from metaphorical darkness--to be rid of a certain disease, or situation, or season of your life. Last December I felt that way. I couldn't wait for 2018 to be in my rearview mirror. I wanted a new page in my story. If you haven't been there before, it is inevitable, you will be there at some point--longing for something you have no control over.

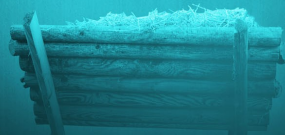
In the book of Isaiah, which we are unpacking from the pulpit this Advent, the Israelites were experiencing that sort of longing. There is a desperation found within the pages of this beautifully scripted book. The Israelites living in the Southern Kingdom of Judah have seen their older, and less wise brother, the Northern Kingdom, fall into the hands of their enemies and they are anticipating the day when that same fate will come to them. It feels to them like the clock has already been set

Continued on page 2

Join us this Advent season

THE PROMISES of Advent

Sunday Mornings
December 1, 8, 15, 22
8:30, 9:45, 10:45



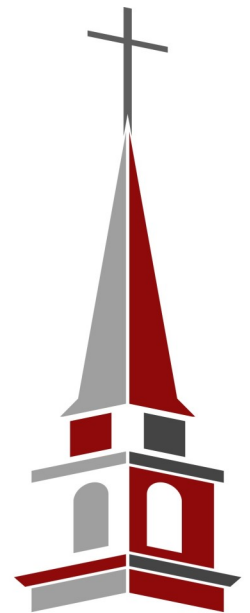
Point Loma Community Presbyterian Church

Sunday Classic Worship
8:30 and 10:45 am
Sanctuary

Café Service
9:45 am
Chapel

Rev. Karla Shaw
Senior Pastor

www.pointlomachurch.org
2128 Chatsworth Blvd.
San Diego, CA 92107



Follow us on Facebook for weekly updates:
www.facebook.com/PointLomaChurch

INSIDE THIS ISSUE

Session Highlights	2
Endowment.....	2
Adult Ministry	3
Senior Adult Ministry	3
BRICK Youth	4
Red Brick Preschool.....	4
Children's Ministry	5
Christmas Services & Events ..	6
Rancho Genesis Day Trip.....	7
Session & Staff.....	7
Civil Rights Pilgrimage	8
Syrian Mission Partner	8
Commitment Cards	8

LOOKING AHEAD

Dec. 1:	Advent Fair
Dec. 3:	Civil Rights Trip Info Session
Dec. 7:	M.O.M. Toy Store
Dec. 8:	Christmas Concerts
Dec. 15:	Red Brick Christmas
Dec. 19:	Blue Christmas
Dec. 24:	Café Style Christmas 10 am
Dec. 24:	Children's Musical 4 pm
Dec. 24:	Noel: Then & Now 7 & 9 pm

Our Vision: Loving Everyone to LIFE with Everything we Have.

Our Mission: Through authentic community, we seek to EXPERIENCE Jesus, JOURNEY into Deeper Faith, STRENGTHEN the Church, and TRANSFORM our World.

Values:

1. We are a good home.
2. We are intergenerational.
3. We inspire engagement.

Pastor Karla, continued from page 1

into motion and there is no way to reverse the striking of the coming hour. Yet, in the midst of that longing--longing already to be out of a season they haven't even entered yet---God gives them an incredible picture of a future Messiah who will rescue them from the need to ever long again.

This season as we await the birth of this once "future Messiah," may we sit with our own longings before God. And may God use this familiar and ancient story to bring us back to God's embrace.

May God bless you and bless those you love with this powerful message of hope,

Pastor Karla

Session Highlights November 20, 2019 Session Meeting

The Session had the joyful task of examining the Elders Class of 2020 at the November meeting. Elders-elect Pam Werner, Stephanie Wylie, Kristin Stephany, John Brand, Chris Capen, Rocky Springstead and Carolyn Verhoye had been nominated by the Congregational Nominating Committee, elected by the congregation in September and then completed a training course with Pastor Karla Shaw. Each then presented their "bold story" to the Session and was enthusiastically approved for service. They will be ordained and installed on January 5 at the 8:30 worship service. The Session will examine the Deacons-elect in December.

The Session welcomed Endowment Committee Chair Steve Smith who discussed plans for Endowment improvements. The Session was glad to have an opportunity to ask questions and be reacquainted with this important church asset.

Before the Session meeting, the Renovation Task Force met for the first time with the newly appointed Capital Campaign Committee (CCC). Then Chairs John Brand and Pam Werner remained to update the Session. The Session authorized the CCC to commission a feasibility study for a proposed 2020 campaign.

Following some discussion on the recognition of national holidays in worship, the Session adjourned until the next meeting on December 18.

John Spafford
Clerk

Merry Christmas and All Best Wishes for 2020, from the Endowment

Our hope for this season is that every member of the PLCPC family has a warmhearted Christmas season. May the season be filled with joy, friendship, and good times. May it also be a time of kindness and many opportunities to reflect on the loving meaning of this season. We are especially thankful for the blessings of this church.

The generosity of so many current and former members of this church are another blessing as we consider the end of this 2019 and the beginning of 2020. Thank you for remembering the Endowment—when you have something to celebrate, in remembering friends, and thanking those who serve our church. Thanks to you, the Endowment is now at its highest value and is therefore able to look to a future of helping fund the church. Because gifts to the Endowment exist in perpetuity, they will be able to support the church for decades to come. Thank you!

If your end-of-year review allows you to make some special or one-time gifts, "Remember the Endowment." The church office can provide any assistance you may need.

All the best for a beautiful, blessed Christmas, and a peaceful, prayerful new year,

The Endowment Committee

ADULT MINISTRY

Sunday Scripture Group—9:45 am in the Parlor. All are invited to join us as we view and discuss Ken Bailey's 4-part series: A Clear View of the Birth of Jesus.

Contact: Bob Simoneau, grs55@cox.net

Monday Morning Men—7:00-8:30 am at Peet's Coffee (955 Catalina Blvd.) All men are invited to join us for coffee and fellowship. Contact: Evan Gratz, evan@pointlomachurch.org

Continuing the Conversation— 4th Monday at 7 pm in the parlor. Due to the holidays, we'll meet on December 16 with members from the Calvary Baptist Church. The meeting will be a panel discussion of U.S. History starting from 1619 from a Black American perspective. All members of the church and community are invited to attend to learn some of our history not covered in traditional U.S. History classes.

Contact: Gordy Lutes, gklutes@gmail.com

Rachel Circle—3rd Mondays at 9:30 am in the Library. Join us December 16 for our holiday potluck, Bring your favorite dish. We welcome all. Contact: Marge Grant, 619-296-2720.

Women's Bible Study—Tuesday, 9-10:30 am, in the Parlor. Women of all ages and stages are welcome! Childcare provided. Additional fellowship time for moms with young children from 10:30-11 am following the study. Current topic: The book of Micah. Contact: Clara Blenis, clblenis@sdccd.edu

Men@Work—Wednesday at 8:30 am in the Library. A time for fellowship and brief Bible study followed by work projects around the church. All abilities are welcome.

Contact: Don Griffith, don.griffith69@gmail.com

Wednesday Men's Bible Study—5 pm in the Parlor with Dr. Gresham Bayne leading us in a study of the Gospel of John, followed by sharing and prayer.

Contact: Jerry Heidt, gheidt@ghhco.com

Wednesday Refresh—1st and 3rd Wed., 7:00-8:30 pm at the home of Jim Grisolia and Carla Stayboldt.

Contact: Jim Grisolia, jamesgrisolia@gmail.com

Knitters—2nd Thursday at 10:00 am in the Parlor. Next meeting, December 12. Contact: Judy White, gmajudy@san.rr.com

Centering Prayer—Every Thursday at 6:30 pm in the Parlor.

Contact: Pastor Alex, alex@pointlomachurch.org

Mops Bible Study—Pastor Karla and Sarah Butterfield are leading a MOPS Bible Study on periodic Mondays from 9:30-10:45 am in the Parlor throughout the next year. Dates are as follows: Jan. 6, Feb. 3, Mar. 2, Mar. 16, Apr. 27, May 11. The study will focus on The Parables. Childcare is provided. Contact: Sarah Butterfield, sarah@pointlomachurch.org



SENIOR
ADULT
MINISTRY
PROGRAMS

Elaine Burrell, Director, MSW | elaine@pointlomachurch.org | 619-223-1633 x210



COMMUNITY CHRISTMAS CONCERT & SOCIAL RECEPTION | Sunday, December 8 | 5:00 pm & 7:00 pm
Social Reception in the Family Life Center | 6:00-7:00 pm

New Covenant Choir, Worship Band, Soloists and members of the San Diego Symphony. Suggested donation for concert: \$20/pp; \$40/family. Complimentary reception will offer savory appetizers, festive beverages and adult fellowship. Join us!



CHRISTMAS LUNCHEON w/ROBERT PARKER PIANO | Tuesday, December 10 | Doors Open at 10 | Entertainment at 11 | Lunch at Noon (\$6) | 9:30-11:00 Blood Pressure Check by a SHARP Nurse.

Enjoy the classy sounds of Robert Parker on the grand piano and a festive turkey meal with all the fixings. RSVP to Elaine.



MEMORY FRIENDS | Tuesday, December 17 | 10-11:30 am in the Family Life Center

A social gathering for people experiencing mild to moderate cognitive changes. Together we will socialize, enjoy a stimulating activity, reminisce and support each other through the journey. Caregivers & family welcome. Light refreshments served. Hosted by Elaine Burrell & Pastor Alex Wirth.



COPING WITH GRIEF DURING THE HOLIDAYS | Wednesday, December 18 | 12:00-1:00pm, Family Life Center
Those who have lost a loved one will gain new insights and learn new ways to cope with the holiday season. Taught by Kelly Engelson from SHARP Hospice Care. Contact Elaine to attend. Light refreshments served.



Forever Fit Gentle Exercise Class | In Partnership with the Peninsula Family YMCA
Every Wednesday 9-9:50 am in the FLC
FREE

High School Small Group

All high school students are invited to join us for our high school small group as we look at the books in the Bible commonly referred to as the "Wisdom Literature" (Job, Psalms, Proverbs and Ecclesiastes). We gather on Thursday evenings from 7-8:30 pm at different locations. Email ro@pointlomachurch.org for the next meeting location and directions.

Confo is Coming!

Confirmation (or as we like to call it "Confo") is the time when young people claim the promises that were made on their behalf in baptism. It is also an opportunity to learn foundations of Christianity, what Presbyterians believe, and to become full-fledged members of Point Loma Community Presbyterian Church. Students who have *not* been baptized will have the opportunity to do so when they are confirmed. Confirmation is open to all students currently in Grades 7-10.



It is important to note that Confirmation is a *discipleship opportunity* and a means of publicly proclaiming your faith. The program consists of *3 key elements*: 1) classes (held on Sundays 11:00 AM – 12:30 PM), 2) a retreat, and 3) a mentor relationship. All are mandatory pieces of the program (attendance at all classes is required, but one miss is allowed if absolutely necessary). Confirmation is a big commitment—please consider your participation carefully!

The cost of the program is \$125 per student, which helps cover the cost of materials, the retreat, lunch for classes and the Confirmation Luncheon. Please do not allow the cost of the program to prohibit participation as scholarships are available.

Tentative Confo schedule is as follows: Confo Classes: April 19 and 26; Confo Retreat: May 1-3; Confo Classes: May 17 and 31 and June 7; Confirmation Sunday & Luncheon: June 14.

Registration begins December 1. For more information, contact RO@pointlomachurch.org.

BRICK MONDAYS

Junior High // Mondays 5-7 pm
High School // Mondays 7-9 pm
Youth Center

BRICK THURSDAY

High School // 7-9 pm
Various locations
Email ro@pointlomachurch.org
for details

BRICK SUNDAYS

Junior High // Sundays 9:45 am
Start in Café service

Youth Build Mission Trip 2020

Registration is now open for our spring break Youth Build Mission Trip, scheduled for March 30-April 3. Rancho Genesis is located just south of Ensenada Mexico. Come join other students (6th thru 12th grade) and adult volunteers in building and learning all about what God is doing to renew and restore orphans in Mexico through the ministry of Genesis Diez. More information is available at: <http://pointlomachurch.org/register/>



Nicole Hage, Director | preschool@pointlomachurch.org
619-223-3327 | www.redbrickpreschool.org

Thank you for purchasing your beautiful poinsettias from the Preschool! We raised a little over \$1,000. We will be using this money to buy new educational toys and supplies for the preschool.

December 10 & 11 we look forward to our annual Gifts to the Manger. Our preschoolers have the opportunity to bring in needed items for babies to be donated to M.O.M. The Preschool classes will have their annual Christmas Programs on December 19 & 20 at 11:30 in the sanctuary. All are welcome to come and listen to the children sing and just enjoy their cuteness.

Registration for next school year is right around the corner! If you are interested in getting more information, please visit our website at www.redbrickpreschool.com and go to "schedule a tour." You can add your child to our waiting list on our website. We will be mailing out registration information letters in January. We will have half day and extended day options in the fall.



Sunday Programs

8:30 am – Traditional Sunday School

Children attend the first part of worship with their caregivers in the sanctuary and are then escorted to Sunday School to participate in age-appropriate classes following a scripture based curriculum.

9:45 am – Kids Café worship

Check-in your children at 9:40 am in Room 8 and pick up immediately following the Café service. Children meet as a group for songs, activities, a message, and an offering before breaking out into age-appropriate small groups.

Attention Parents!

During the Advent season (beginning December 1) Kids Café will meet in Classroom 8 instead of the Family Life Center for our worship time.

Please drop-off your child in Room 8 by 9:40 am and pick them up at the following locations:

- Preschool-TK in Classroom 7
- Kinder-2nd grade in Classroom 8
- 3rd-5th grade in Classroom 6.



Journey

Our group for 4th & 5th graders meets every Monday evening in the Youth Center from 4-

5:30 pm for food, fellowship and fun. \$3 donation for pizza. Friends are always welcome!

Register Now!

Forest Home Winter Camp!

DATE: **January 10-12, 2020**

WHO: **3rd - 5th grade**

COST: **\$195**

INFO: Pointlomachurch.org/register



Children's Winter Camp at Forest Home is an opportunity for children, grades 3-5, to explore God's word and His creation in a beautiful setting in the San Bernardino mountains.

They will have a memorable experience with friends while having tons of seasonal outdoor fun. Leaders will engage the kids in dynamic Bible teaching which gives them an opportunity to affirm their faith life or kick-start it into action. Lives are transformed at Forest Home! \$195 includes all meals, lodging and activities. Spots are limited so register online today!

Kids Club on Thursdays



Kids Club is a fun & relaxed midweek program that allows kids to connect with others through crafts, active games, Bible stories, snacks and music. It is not essential, but many families pair this program with Children's Choir.

Grades 2-6 meet from 4:00-4:50 pm

Age 4 -Grade 1 meet from 5:00-5:45 pm

Children and Youth Choirs

Cherub Choir

Age 4 - Grade 1

Thursdays 4:00-4:50 pm



Joyful Praise Choir

Grades 2 - 6

Thursdays 5:00-6:00 pm

Contact Alicia at alicia@pointlomachurch.org for more information.

MOPS: Mothers of Preschoolers

www.meetup.com/playgroup-754

Contact: sarah@pointlomachurch.org



MOPS.ORG

Dec 2: 9:30 to 11:30 am Dr. Ashley Hales
"Creating Habits of Generosity", FLC

Dec. 9: 9:15 to 11:45 Moms Morning Out

Dec 16: Favorite Things Christmas Party 9:30 to 11:30 am, FLC

Children's Musical
Carriers of the Light
December 24
4 pm
Sanctuary

Christmas at PLCPC

As we enter this Advent Season together, we hope that you will find the time to join us for a variety of services and opportunities.

For Unto Us a
Child
is Born

A Christmas Concert

for the community
featuring Handel's *Messiah*

Sunday, December 8
5:00 pm & 7:00 pm

Social Reception 6:00 -7:00 pm in the FLC

December 8 | 5 & 7 pm | Reception 6 pm
Our annual Christmas Concert for the Community is a wonderful opportunity to invite your friends, family and neighbors to celebrate the beginning of the Advent Season with a wide variety of instrumental and vocal musical selections. Identical concerts will be performed at 5 pm and 7 pm in the Sanctuary. This year we are hosting a Social Reception at 6 pm in the Family Life Center with savory appetizers, festive beverages and adult fellowship. Join us!

You Are Invited
Twas the Night
Before Christmas
a Red Brick

December 15 | 2-4 pm | Family Life Center

Red Brick Christmas features crafts, hot cocoa, cookies, Santa, stories, Christmas carol sing-a-long, and new this year a pajama parade. All ages are encouraged to attend the celebration in the merriest holiday PJs for our fantastic Pajama Parade!

Blue Christmas

A service of remembrance
December 19, 6 pm
Chapel

December 19 | 6 pm | Chapel

For many of us, the holidays can be a difficult time. We are struggling with the feelings of grief or loss. Join us for a Blue Christmas service as we remember and honor those we have lost.

Childcare is available for those 4 & under.

Christmas Eve Services

10 am Cafe Style Christmas*
in the Chapel

4 pm Children's Musical*
in the Sanctuary

7 & 9 pm Noel: Then & Now
in the Sanctuary

* childcare available for those 4 & under

December 24 | Christmas Eve Services

10 am Cafe Style Christmas
A casual worship experience with songs, a message, and goodies*

4 pm Children's Musical
A musical celebration for all ages led by our children*

7&9 pm Noel: Then & Now
A Modern take on the Nativity

SESSION & STAFF

THE SESSION OF PLCPC *Denotes Chair

Rev. Karla Shaw, Senior Pastor 619-223-1633 Ext: 202
 Rev. Alex Wirth, Associate Pastor 619-223-1633 Ext: 205
 John Spafford, Clerk 619-985-4983, clerk@pointlomachurch.org

Elder Class of 2019	Phone	E-mail
Dave Baker <i>Adult Ministry (Family)</i>	619-224-0437	dbakerta@yahoo.com
Debbie Fountain <i>Personnel</i>	619-226-7718	debbiefountain2278@gmail.com
Mary Harker <i>Nominating*, Endowment</i>	619-222-0827	harkerme24@cox.net
Dwight Kellogg <i>Personnel*, Audit*</i>	914-262-1618	dwrightkellogg@mac.com
Sam Laub <i>Mission Beyond*</i>	408-313-4233	selaub@aol.com
Catherine Rodriguez <i>Children's Ministry/Preschool</i>	619-379-2459	cpfr@att.net
Dave Simmons <i>Facilities* & Renovation</i>	619-749-6551 619-954-9526	davesimmons3570@gmail.com
Beth Zedaker <i>Adult Ministry*</i>	619-602-6910	bethzedaker@gmail.com
Elder Class of 2020	Phone	E-mail
Gresham Bayne <i>Finance & Stewardship*</i>	619-223-3494	cgbaynemd@gmail.com
Douglas Buser	619-226-6332	valuedplanner@yahoo.com
Rebecca Cress <i>Worship & Arts*</i>	619-255-3220	cressteach@yahoo.com
Susie LaDow <i>Nominating</i>	619-222-3790	susieladow@gmail.com
Sam Przywitowski <i>Planning*</i>	619-313-3162	sprzywitowski@gmail.com
Rob Wood <i>Outreach & Church Growth*</i>	619-922-1644	rwood1976@hotmail.com
Elder Class of 2021	Phone	E-mail
Buck Buchanan <i>Personnel</i>	619-841-4080	pbuchanan98@yahoo.com
Max Butterfield <i>Planning</i>	810-441-6527	mbutter@pointloma.edu
Mike Long <i>Youth Ministry*</i>	254-640-0451	mikelong22@gmail.com
Frank Polese <i>Finance & Stewardship</i>	619-843-1282	fpolese@oasismaterials.com
Rita Solberg <i>Mission Beyond</i>	619-222-2841	ritasolberg@cox.net
Barbett Wood* <i>Children's Ministry/ Preschool*, Presbytery Commissioner</i>	619-226-1644	makoakani@gmail.com

Church Ministry Program and Support Staff 619-223-1633

OFFICE HOURS

Monday—Thursday 9 am to 5 pm

Friday— 9 am to 1 pm

Rev. Karla Shaw, Senior Pastor

karla@pointlomachurch.org—Ext. 202

Rev. Alex Wirth, Associate Pastor

alex@pointlomachurch.org—Ext. 205

Rev. Dr. Chris Lenocker, Parish Associate

chris.lenocker@gmail.com—619-987-8433

Jolene Wade, Director of Operations & Church Life—Ext. 204

jolene@pointlomachurch.org

Alicia McMillan, Director of Worship & Music—Ext. 208

Organist/Director of Children's Choirs

alicia@pointlomachurch.org

Bryan Verhoye, Music Associate & Pianist

mrvagguy@aol.com

Lisa Mitchell, Music and Children's Choir Assistant

lisa@pointlomachurch.org

Evan Gratz, Director of Community Life

evan@pointlomachurch.org—Ext. 211

Elaine Burrell, Director of Senior Adult Ministry

elaine@pointlomachurch.org—Ext. 210

R. O. Smith, Director of Youth Ministry/Café Worship Leader

ro@pointlomachurch.org—Ext. 216

Karen Connor, Director of Children's Ministry

karen@pointlomachurch.org—Ext. 215

Erin Shetter, Children's Ministry Assistant

erin@pointlomachurch.org—Ext. 212

Cynthia Hernandez, Child Care Coordinator

cynthia@pointlomachurch.org

Sarah Butterfield, MOPS Coordinator/ Youth Ministry Associate

sarahbutterfield@gmail.com

Nicole Hage, Preschool & TLC Director

preschool@pointlomachurch.org—Ext. 220

Andrea Benitez, Preschool Admin Assistant

andrea@pointlomachurch.org—Ext. 221

Ann Simoneau, Administrative Assistant—Ext. 203

ann@pointlomachurch.org

Evelyn Lambino, Financial Secretary—Ext. 206

evelyn@pointlomachurch.org

Joyce Pritchett, Communications Coordinator

communications@pointlomachurch.org—Ext. 209

Church Office / Front Desk—Ext. 201

frontdesk@pointlomachurch.org

Join us for a Rancho Genesis Day Trip

WHEN: January 11

TIME: leave PLCPC at 6:30 am

COST: \$25 (includes transportation, lunch and snacks)

REGISTER: <http://pointlomachurch.org/register/>



WHY: You have the opportunity to see all of the work that's being done within the Rancho Genesis community. We'll be going to the new camp property for the day, which will allow people to see and ask questions about this wonderful ministry.

For more information contact: Evan@pointlomachurch.org

Civil Rights Pilgrimage: Follow in the Footsteps and Be Changed

Pastor Karla is leading a trip from May 23-30, 2020 to the deep South (Georgia, Alabama, Mississippi and Tennessee) to follow in the footsteps of those involved in our Civil Rights movement. This experience, facilitated by Dr. Todd Allen from Messiah College, includes interaction with historical figures, authors, and places, as we engage in the conversation of race, all from a theological perspective. Good southern food is also a guarantee! The cost for the trip is \$2000 plus airfare (double occupancy) and includes ground transportation, breakfast/dinner, hotels, entrance fees, speakers, and a tour guide. **An informationALmeeting is scheduled for Tuesday, December 3 at 10:45 am in the Parlor.** If you can't make the meeting, but are interested in the trip, please contact karla@pointlomachurch.org.



Together For the Family—Mission Partner



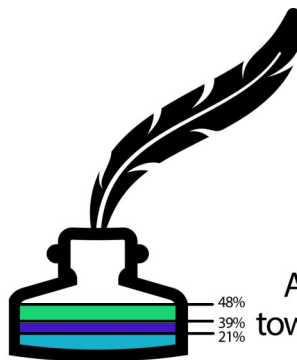
On **Sunday, December 22 following the 8:30 am service**, we welcome Izdihar Kassis, her husband the Rev Dr Riad Kassis and their family. Join us for a special presentation in the Church Library. Izdihar started Together For the Family (TFF), a PLCPC Mission Partner, which supports Syrian war refugees, especially the women and children fleeing violence and trauma. The Syrian war brought more than 1.5 million refugees to Lebanon, a country of 4 million people. Hundreds of thousands of those people live in the vast UN tent cities in the Beqaa Valley. Izdihar and her TFF team visit the refugee tents tirelessly, providing the newborns with medicine, diapers, and baby food. TFF organizes camps for the traumatized children, offering everything from group therapy to singing to art therapy, letting young children

know of God's love for them. Please make plans now to attend this presentation, followed by a question and answer session.

Interfaith shelter award

Interfaith Shelter Network recently held their annual gala, called Celestial Nights. This year, Point Loma Community Presbyterian Church was selected as one of the honorees. The Board of Interfaith Shelter said, "We wish to honor your service in partnering with us in sheltering the homeless in our community. The board of directors of Interfaith Shelter Network, the entire staff along with the many people you have served over the years are extremely grateful for your kind and dedicated service."

Thank you for the role you have all played in making the Interfaith Shelter program at PLCPC a success. We will again be hosting the rotational shelter for homeless men, women and children on February 22-March 3, 2020.



Your Story
Our Story
God's Story
BE BOLD!

Thank you for returning your Commitment Cards for 2020. As of November 25, we are 48% towards our committed giving goal.

pointlomachurch.org/be-bold/

You can still submit your commitment card for 2020. Simply drop it in the Sunday offering, mail it back to the Church office or complete it online at pointlomachurch.org/be-bold.